

# National Rural Fire Authority New Zealand



**Murray Dudfield** MNZM NZIF  
Chief Rural Fire Officer

## New Zealand fire environment

- NZ predominantly still "rural"
  - land area: 27 million ha
  - population: 4 million
- temperate, maritime climate, but diverse range of microclimates due to topography
- increasingly complex fuel types, with higher fuel loads and more continuous fuels
- around 4000 forest and rangeland wildfires/year burn 7000 ha, fires primarily human-caused

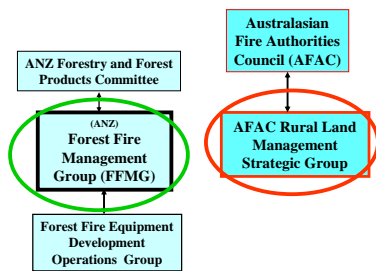


## Fire cause in New Zealand Forests

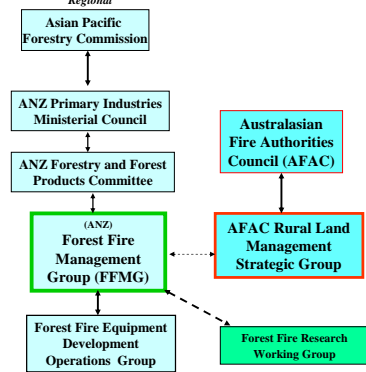
- People
  - arson
  - fire escapes
- Operational machinery
- 500 fires annually

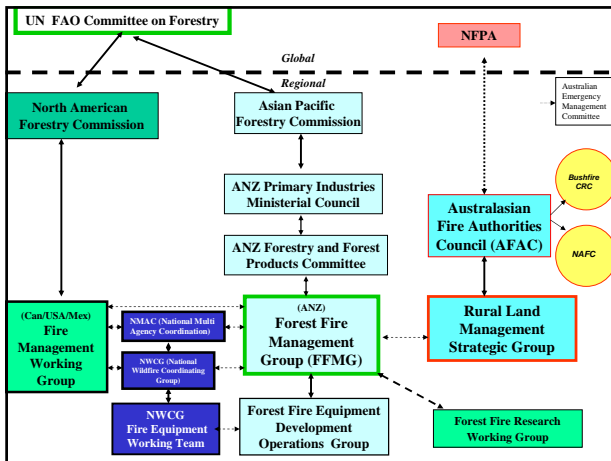


Global  
Regional



Global  
Regional

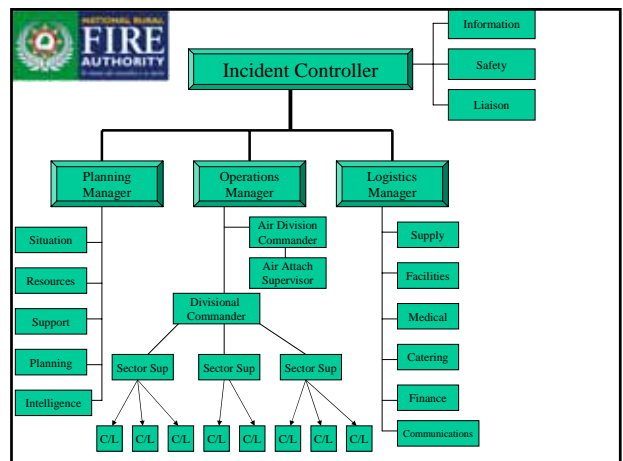
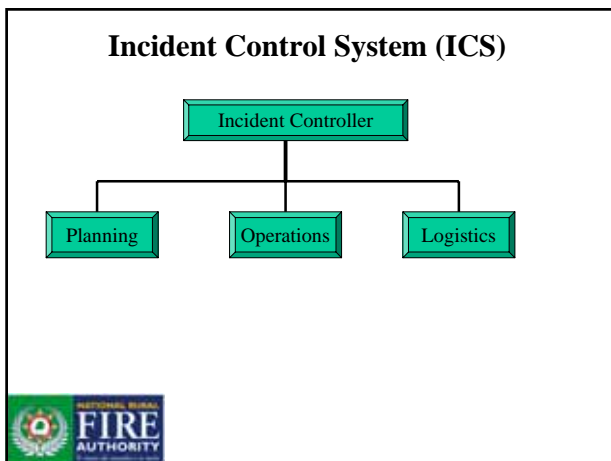




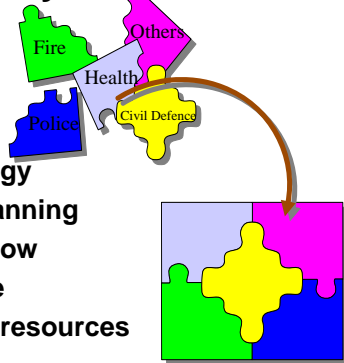
### Strategic Action 4.11: Managing multiple incidents

**4.10.3** Through the use of ICS in all jurisdictions and in response to any type of fire or other emergency, the agencies, groups and other organisations involved will acquire the experience to effectively use the system in trans-boundary and multiple fire situations.

- All emergency management agencies in New Zealand adopted the Incident Control System (ICS) in 1997.
- Regular joint training between agencies ongoing



## Inter-agency Coordination



- ✓ Shared strategy
- ✓ Integrated planning
- ✓ Information flow
- ✓ Cost effective
- ✓ Better use of resources

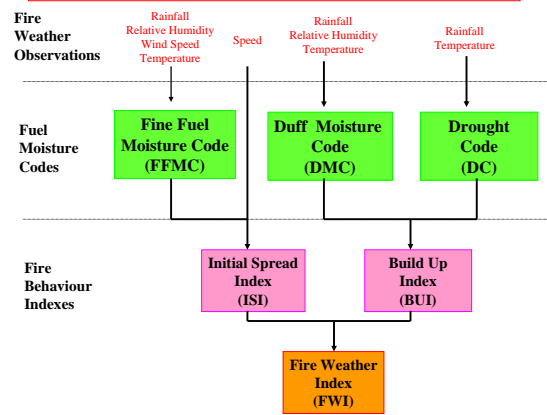
## Strategic Action 4.5: Fire danger rating and early warning systems

- 4.5.1** Countries and/or organisations should establish a fire danger rating system or adapt an existing system to the local environment, based on land cover, vegetation and daily weather data
- ➔ New Zealand has a network of 155 remote automatic weather stations in place.
  - ➔ Adopted the Canadian Fire Danger Rating System for monitoring daily fire danger.
  - ➔ Australia has developed fire danger rating systems
  - ➔ Joint ANZ forest fire research programme includes the development of fire behaviour models for different fuel types.

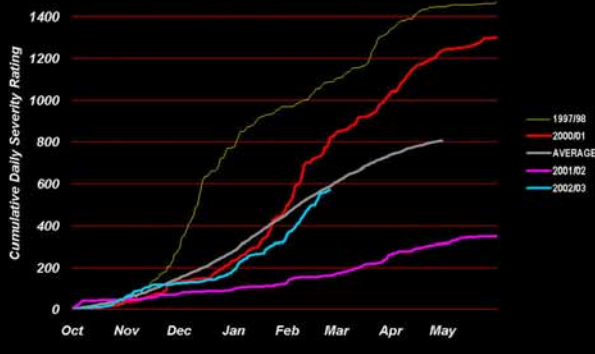
## Two examples of Remote Automatic Weather Stations



## NEW ZEALAND FIRE WEATHER INDEX SYSTEM



Tracking Fire Season Severity  
Wellington Aero October 1- May 31



## Strategic Action 4.1: Fire and resource management planning

- 4.1.1** All fire management plans and activities should be based on a clear and comprehensive policy, legal and institutional framework.
- ➔ New Zealand – Forest and Rural Fires Act 1977
  - ➔ Australia/New Zealand Forest Fire Management Group (FFMG) currently development a forest and rangelands fire management policy position for approval by the joint Australia/New Zealand Primary Industries Ministerial Council

**Strategic Action 4.10: Large fire suppression and management**

**4.10.4** Pre-fire-season agreements should be prepared that provide for assistance during large fires when local resources are fully committed:

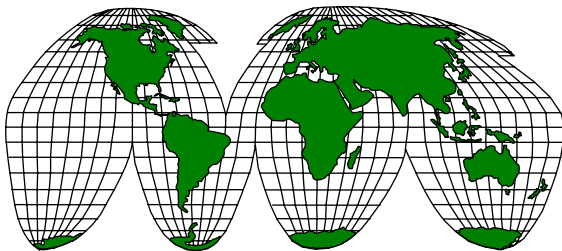
- New Zealand and Australia through the FFMG has agreements in place with USA and Canada.
- The Australian State of Victoria and New Zealand have an agreement in place.

**New Zealand Overseas Deployments**

- August 2000 - USA (11) \*
- January 2002 - NSW Australia (12)
- August 2002 - USA (10) \*
- January 2003 - Vic - Australia (63)
- August 2003 – USA (12) \*
- August 2006 – USA (29) \*
- January 2007 – Vic – Australia (112)

**Global fire management strategy**

**Strategy to enhance international cooperation in fire management**



***Sharing Global Solution***

**Ongoing Objectives**

- Maintain the Guidelines
- Use and promote the Guidelines
- Review experiences from applying the Guidelines
- Strengthen international cooperation
- Active members of the Fire Management Action Alliance
- Member of the FMAA Advisory Group



<http://www.fao.org/forestry/site/35833/en/>