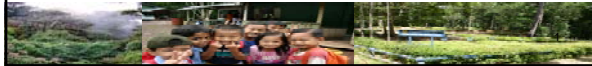




ENSURING THE SUSTAINABILITY

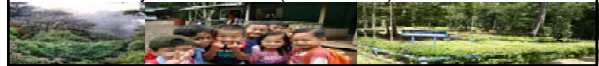
by PT. Sumalindo Lestari Jaya, Tbk
April 2008



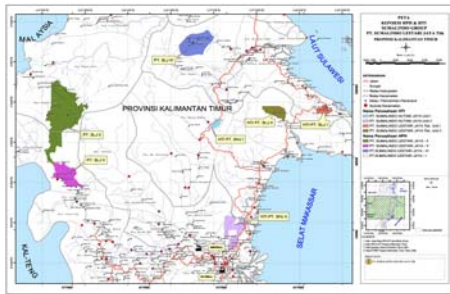
About Us

PT. Sumalindo Lestari Jaya, Tbk :

- Integrated timber company listed on the Indonesia Stock Exchange.
- Member of Singapore-based forestry group, Samko Forest Holding (top five timber groups in Asia)
- Operate natural tropical and plantation forest :
 - covering 448,986 hectares in East Kalimantan
 - tree plantation covering 116,876 hectares.
- Awarded prestigious Forest Stewardship Council (FSC) certificate for sustainable forest management and chain of custody on SLJ Unit II (267.600 Ha)



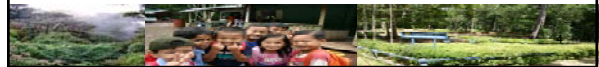
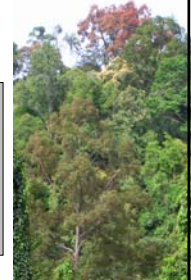
Where We Operate



Our Vision

To be the best in the world and socially responsible integrated wood-based industry which produce eco solutions by utilizing its raw material from sustainable resources through:

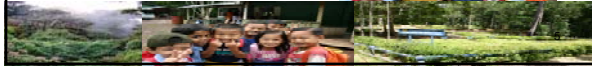
- To manage a group of integrated wood-based industry and socially responsible, dealing with plywood mill, MDF mill, secondary process and related wood industries.
- Supported by continuous raw material supply from the natural and plantation forest which are sustain on forest resources management.
- Processed with environmentally friendly standard,
- Increased Product value through value chain, product development, human resources development and distribution channel



Our Commitments

We are committed to:

- Raise greater cross border understanding & co-operations among The World
- Promote Corporate Social Responsibility amongst businesses through use of sustainable & eco-friendly products, and
- Promote adoption of an eco-friendly lifestyle.



HCVF Area in PT. SUMALINDO LESTARI JAYA Unit II

Payang Mt. Conserv. Zone :

- Wide of area 12.751,58 Ha
- Including in Kalimantan endemic bird Species habitat based on Birdlife International,
- Lowland rain forest type
- Catchment area of Boh's river flow area,
- Payang Mt. buffer zone,
- Identified as HCVF area

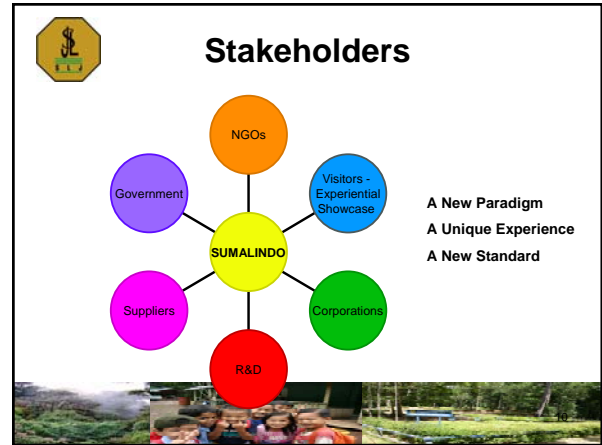
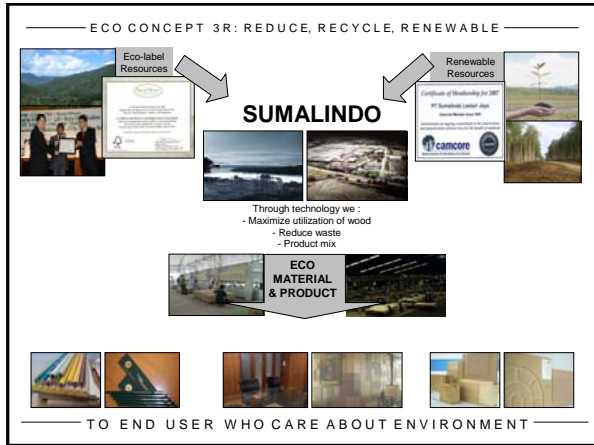
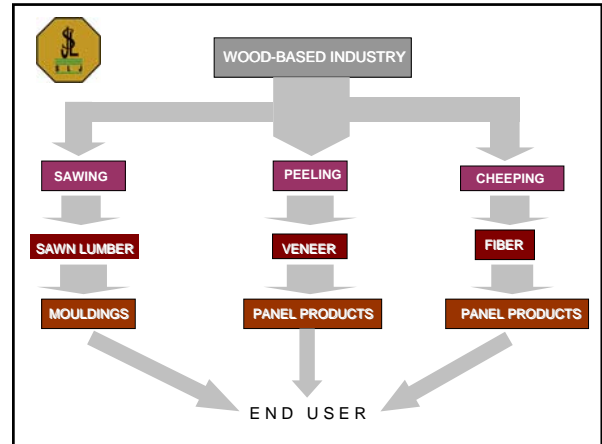
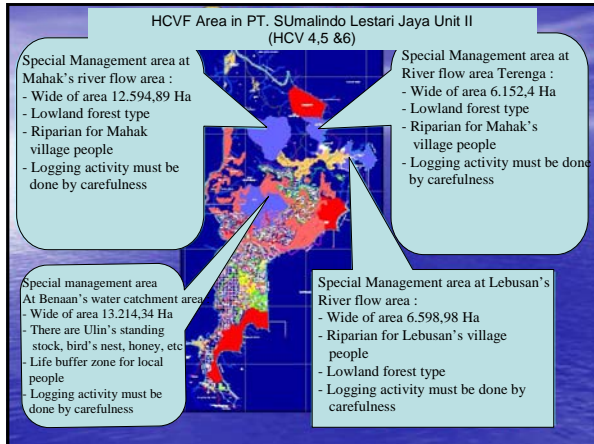
Conservation zone at Hulu Boh River flow area which has :

- Wide of area 7.440,9 Ha
- Lowland forest type

Tabang's river conservation zone :

- Wide of area 14.415,19 Ha
- Adjacent with Protected forest at Tabang River
- Lowland forest type.





Conclusions : WE CAN NOT DO IT ALONE
We need Commitment of All Stakeholders

- Business Commitment :**
 - The award of FSC's SFM on SLJ Unit II is a result of nearly 16 years of commitments with :
 - Minimal external financial support
 - Unclear/minimal financial benefits ?
 - There are a very wide production forests area which has been set-aside from the forest concession of SLJ unit II to become conservation area, so that there are billion dollars of wood value property of SLJ which is frozen.
- Government Commitment :**
 - To grant Self Approval and Self Assessment to Forest Management Unit which has been SFM certified,
 - To reduce Duty/Tax on local and importing country,
 - e.g. :- Local : Reforestation Fee and Forest resources provision
 - Importing country : Import tax
- Buyers/consumers Commitment :**
 - Buyers/Consumers must commit to use FSC certified products, **with premium price** in order to share the cost of forest management to maintain the ecological environment on their working areas.

Conclusions : WE CAN NOT DO IT ALONE
We need Commitment of All Stakeholders
(Continued)

- NGO's commitment :**
 - To assist creating the atmosphere towards a mutual cooperation amongst forest stakeholders in preserving the forest,
 - To become an effective facilitator for forest managers in their process to achieve sustainable forest management which marked by obtaining the FSC forest certification,
 - To assist FSC certificate holders on creating market for their FSC products especially in wood panel and wood working products,
- FSC's Commitment :**
 - To Provide proper marketing strategies to strengthen FSC market in wood panel and wood working market.



Thank you.

